

cyclomedia

# Street Smart Quick Start Guide

March 2021





## Getting Started in Street Smart is easy!

1 Open a browser and go to

<https://streetsmart.cyclomedia.com/>

(Or just click the link!)

### Log in

User name

your email here

☐ Remember My Login

Next

Cancel

### Servicedesk

Questions or comments about Street Smart?

Reset password

F.A.Q.

Contact



For the best experience, use Chrome, Edge or Firefox.

# Log In



Cyclomedia offers two types of logins: **Cyclomedia logins** and **Single sign-on (SSO) logins**. In both cases, your login is usually your email address. Not sure? Want to set up SSO? Ask your Cyclomedia representative.

The Cyclomedia Login Screen is a web form with a green header labeled 'Log in'. It contains a 'User name' field with the placeholder text 'your email here'. Below this is a checkbox labeled 'Remember My Login'. At the bottom are two buttons: 'Next' and 'Cancel'.

2

Enter your email address or SSO login in the **User name** field.

3

Click the **Next** button.



Cyclomedia logins: Don't want to enter your information every time? Be sure to check the **Remember My Login** box!

4

Enter your password.



Cyclomedia login users, see **page 14** for help creating a new password. SSO login users, you probably have a login you know well, if not, check with your IT department.

5

Click the **Log in** or **Sign in** button.

*SSO Login Screen Example*

*Cyclomedia Login Screen*

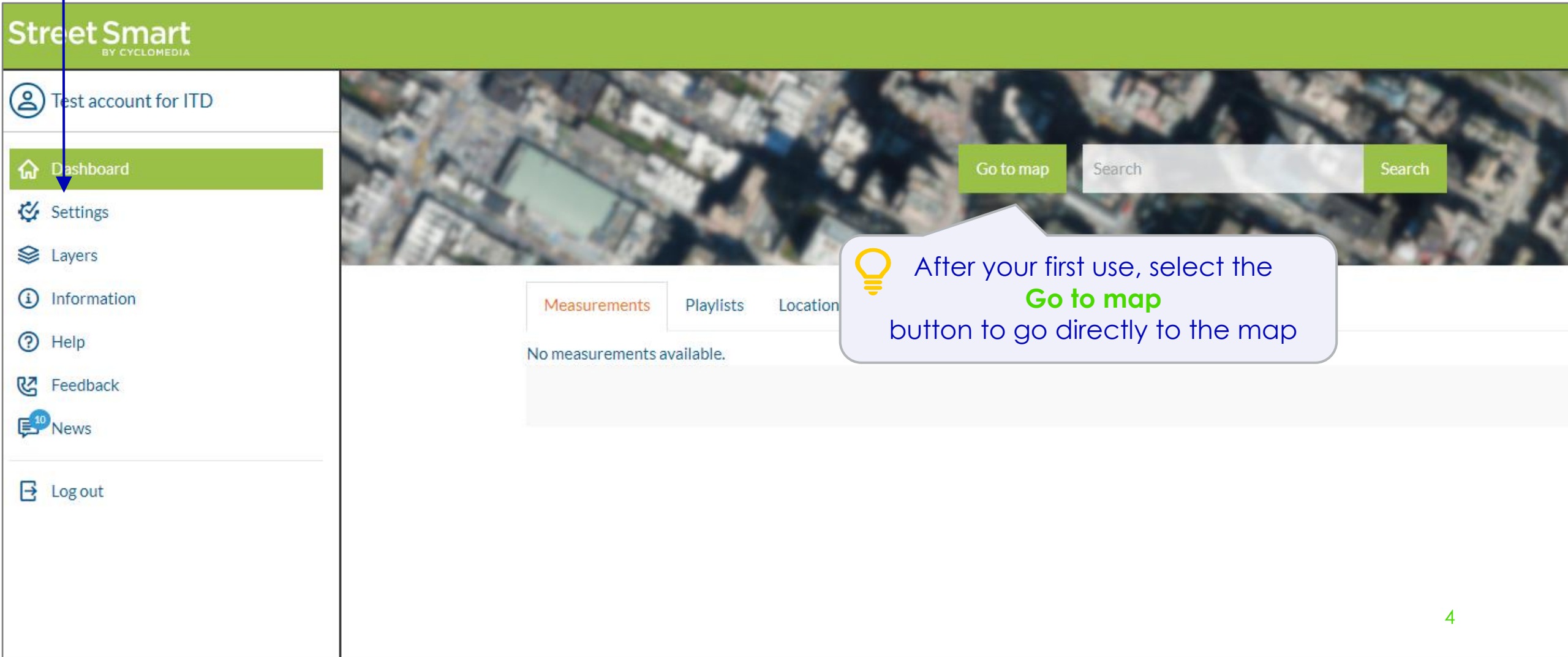
The Cyclomedia Login Screen is a web form with a green header labeled 'Log in'. It contains a 'User name' field with the placeholder text 'yourname@itd.idaho.gov'. Below this is a 'Password' field with masked characters '\*\*\*\*\*'. At the bottom are two buttons: 'Log in' and 'Cancel'.

The SSO Login Screen Example is a Microsoft login page. It features the Microsoft logo and the email address '@cyclomedia.com'. The main heading is 'Enter password'. Below this is a 'Password' field. There are two links: 'Forgot my password' and 'Sign in with another account'. At the bottom right is a blue 'Sign in' button.

# Street Smart Dashboard

6

You are almost there! Street Smart will initially open with the Dashboard screen displayed. On your first use, please go to the **Settings** tab to check a few things.



# Street Smart Settings

**Street Smart** BY CYCLOMEDIA

Max Smart

Settings

Dashboard

Settings

Layers

Information

Help

Training

Feedback

News

Log out

Start location

OpenStreetMap

1000 mi

Application

Language

Configuration

Viewer SRS

Measurement units

Max overlay draw distance [us-ft]

Default search area

Use default search area

English (US)

USA - All Elevation

United States of America Elevation Tool

EPSG:2236 - NAD83 / Florida East (ft)

Default unit from selected srs

105

Coral Gables, FL

☒

Apply

Add attribute

5

7

8

9

10

Setup is complete!  
Click the **map icon** to begin using Street Smart.

For the **Viewer SRS (Spatial Reference System)**, you should see your local coordinate system. There is usually no reason to change it.

Planning frequent searches for addresses in one city? Check **Use default search area**, then type in *City, State*.

After changes, click the **Apply** button.

! Street Smart will refresh after applying this change. This setting will be remembered next time you open Street Smart.



# Street Smart Default Map

The map will default to a view of the entire US with coverage areas in green. You can navigate the map to your area of interest the same way you would any web map interface. To change the default map location, follow these steps.

**11** Select the **Home** icon to return to the Dashboard, then select the **Settings** tab.

**i** You will see coverage of areas outside of your area. These are locations collected for other customers who share similar configuration settings. If you zoom to any of these areas, you will not be able to see the imagery, and your imagery will only be accessible by your organization.

**12** Navigate the **Start location** map to your area of interest, then click the **Apply** button.

**!** The new default location will not take effect until the **next time you open Street Smart** or **refresh your browser**.

Street Smart  
BY CYCLOMEDIA

Search

Eri World street map

Dashboard

Settings

Layers

Information

Help

Start location

OpenStreetMap

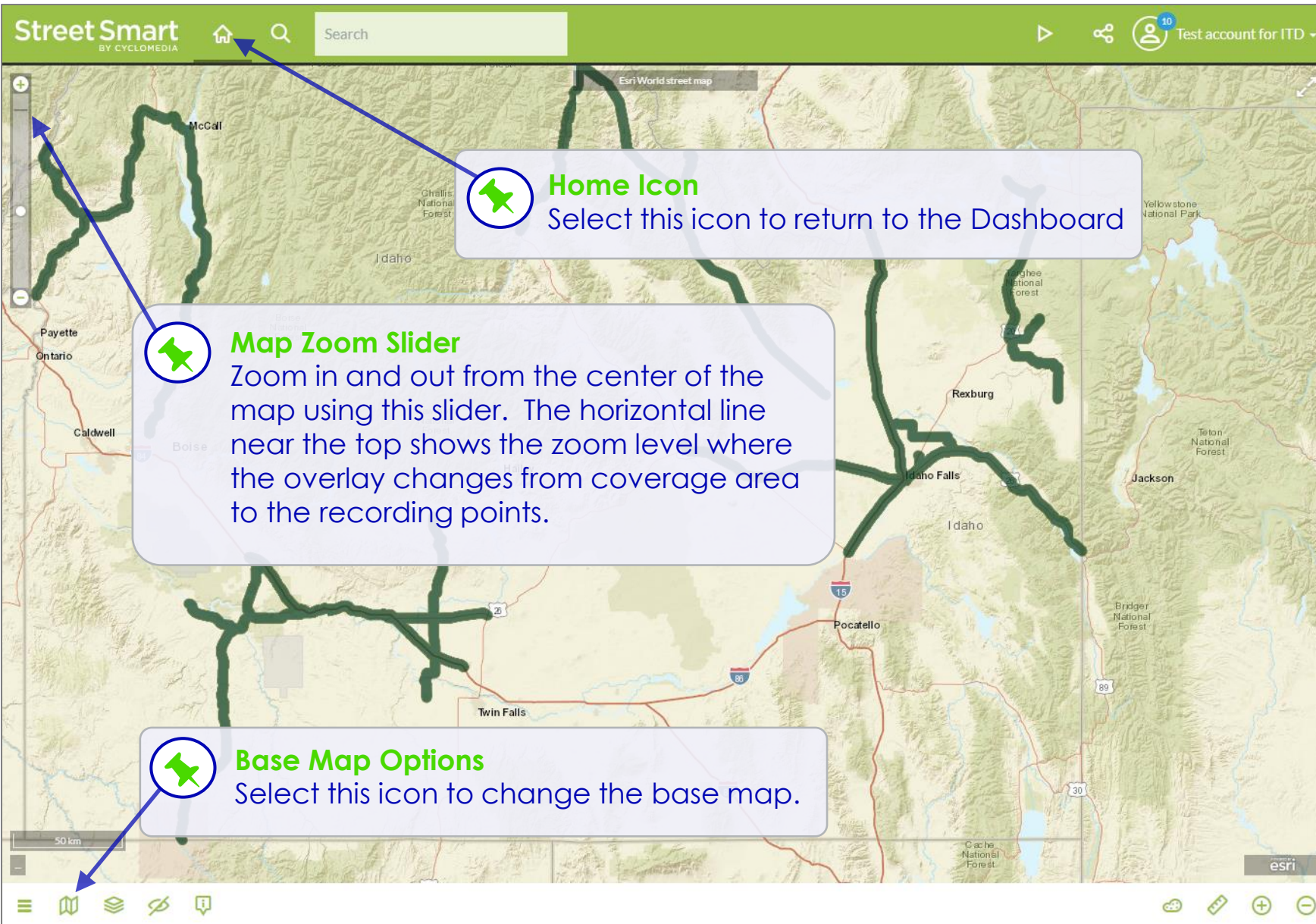
United States

1000 km

© OpenStreetMap contributors

Apply

# Street Smart Map



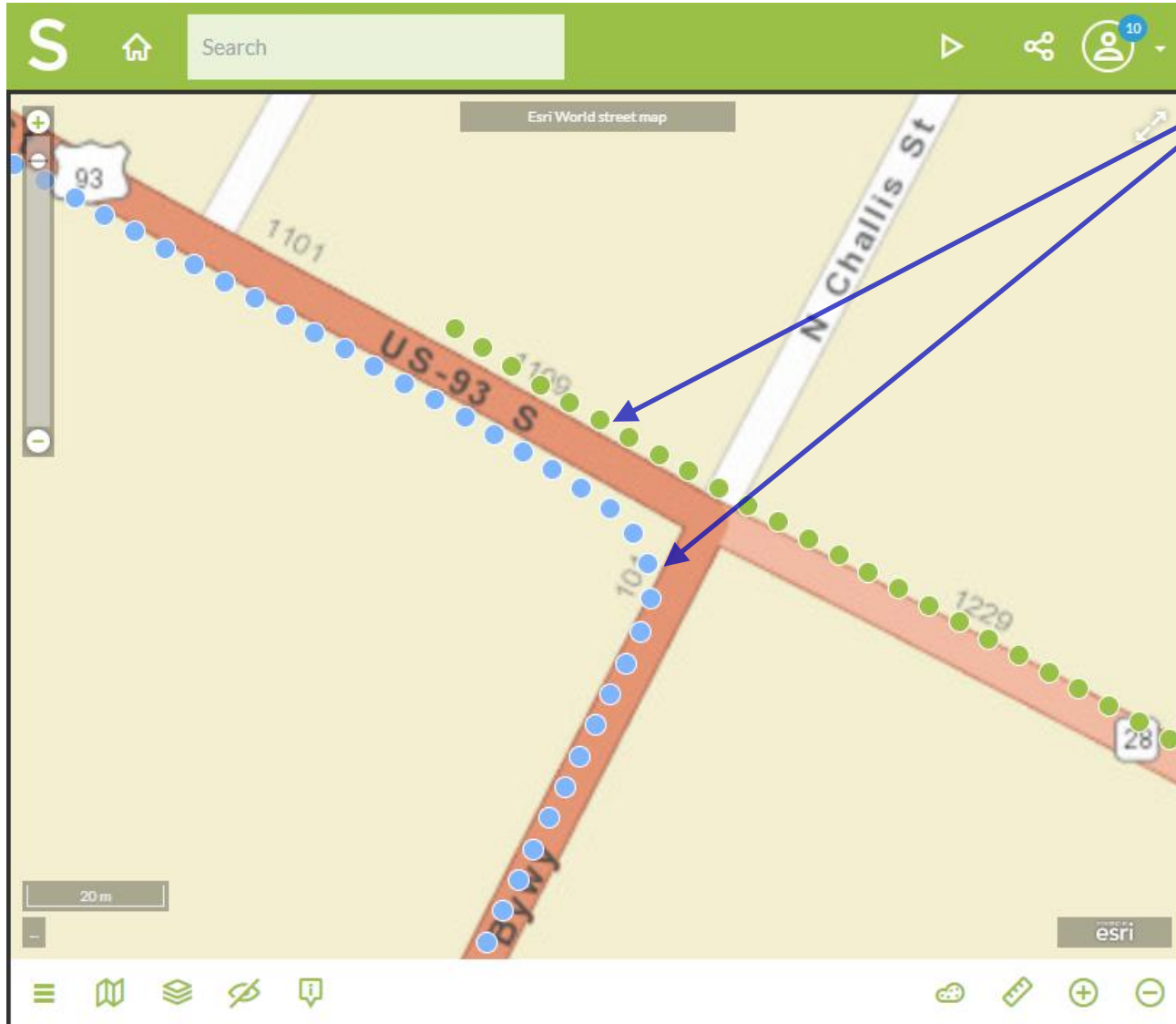
## Coverage Area

- Navigate the map using your mouse scroll wheel, the map zoom slider or hold the shift key and left mouse button to draw a box.
- Green areas show locations where imagery is available.
- Zoom in to change display from coverage area to 360° recording points (see next slide).



# Street Smart Recording Points

When zoomed to street level, coverage area changes to recording points. Each circle represents a 360° panoramic image. Images are taken every 5 meters.



Click any blue or green recording point to open the panoramic image.



Image  
+  
LiDAR

Green circles indicate that 3D Images and measuring tools are available.

Image  
Only

Blue circles indicate that standard images and measuring are available.\*

\*Occasionally with new 3D projects blue indicates the 3D surface has not been published yet. Check back soon!



# Street Smart Imagery

Each image provides a 360° by 180° view! Click and drag your mouse to change direction or use your mouse wheel to zoom in and out within the image. For a quick zoom, click and hold the left mouse button.

The screenshot displays the Street Smart Imagery web application. The interface is divided into two main sections: a map on the left and a street view image on the right. The map section shows a green viewing cone indicating the current location and direction. The street view image shows a road with a green viewing cone and recording points overlaid. A green pin icon is used to mark a location on the map and a recording point on the image.

**Street Smart**  
BY CYCLOMEDIA

Search

7/1/2020

EXIT 118  
WEST BUSINESS  
15 20 20  
Idaho Falls  
HISTORIC DOWNTOWN  
1 MILE  
VISITOR INFORMATION

The viewing cone on the map shows the current location and the direction being displayed in the image.

Recording points also overlay the image. Click the circle to navigate to that location.

20 m

2656362.21, 1366399.59

esri

CycloMedia



# 3D Images and Measuring

## i 3D Depth Surface

Along with the capturing the panoramic photographs, the Cyclomedia vehicles also use a LiDAR sensor. The information collected from this special sensor is used to create a 3D model, called a depth surface. This model is hiding behind every image and allows you to make accurate measurements right within the picture!

**The depth surface and measuring are covered more in Cyclomedia's Street Smart Training.**

Here's a sneak peak...



Once in Measurement Mode, use this toggle to switch between the image and the 3D Depth Surface.

This icon begins Measurement Mode and displays the 5 options below.



Location



Distance



Surface



Orthogonal



Height





# Image Overlays

31

The 3D cursor is available for green recording points and is shaped like a target. It drapes over the 3D Depth Surface and is helpful for finding edges.

## OVERLAYS

Layers

Viewer

☒ Cyclorama recording layer☒ 3D cursor

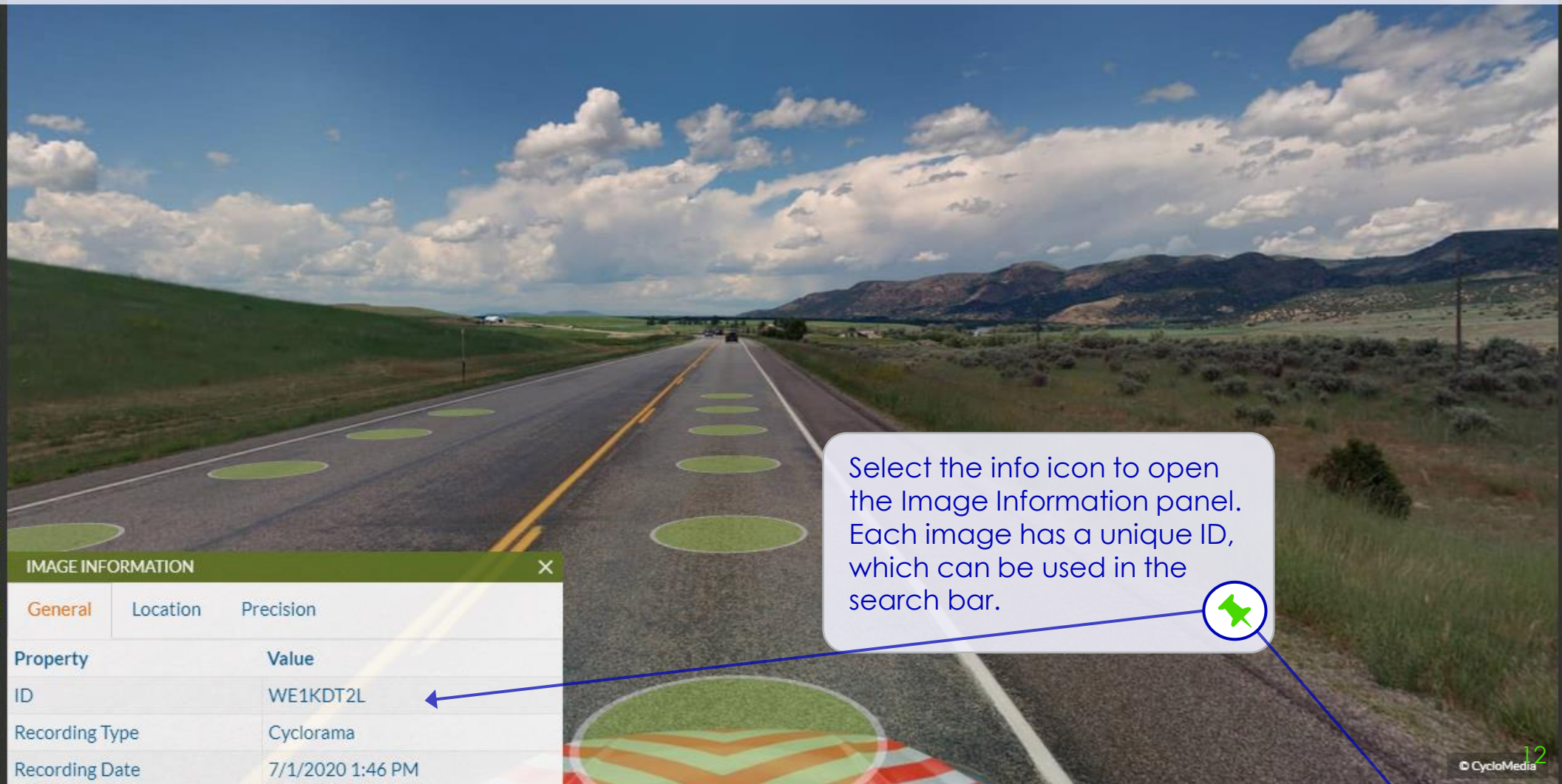
Open the Overlays panel to toggle the recording point layer or 3D cursor on and off.



Esri World Aerial

7/1/2020

# Image Information



Select the info icon to open the Image Information panel. Each image has a unique ID, which can be used in the search bar.

IMAGE INFORMATION		
General	Location	Precision
Property	Value	
ID	WE1KDT2L	
Recording Type	Cyclorama	
Recording Date	7/1/2020 1:46 PM	

# Search Options



- Address
  - 410 W Broadway St, Idaho Falls, ID
- Street or Intersection
  - Air Base Rd, Mountain Home, ID
  - Air Base Rd & Grandview Rd, Mountain Home, ID
- Coordinates
  - 2357689.59, 1331993.57
- Image ID
  - WE1KCQ9W





# Password Reset

For Cyclomedia Logins Only\*

We all forget our passwords sometimes. If it happens to you, it only takes a minute to have a new password sent right to your email. Want to change it to something you can remember? We've got you covered there too!

- 1 **To change or reset your password**, click the **Reset password** button on Log in screen

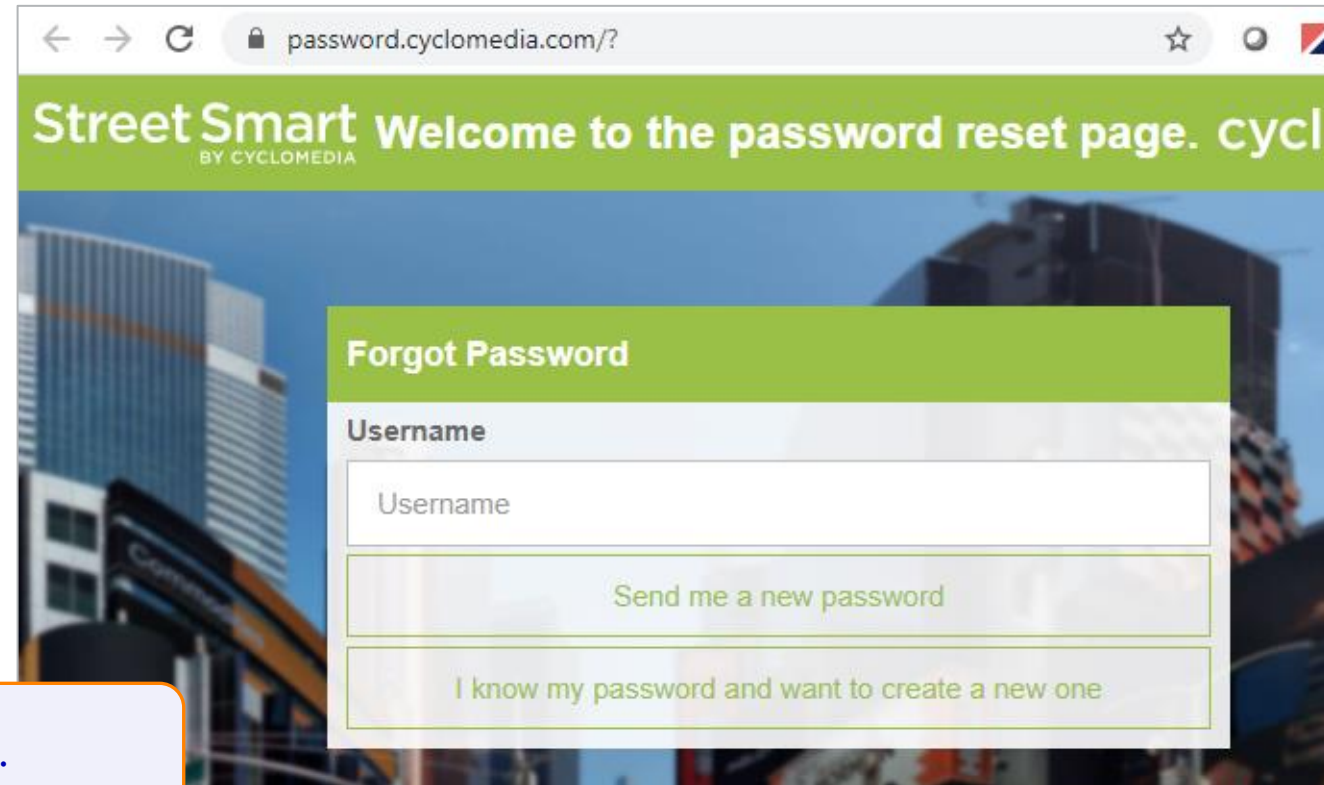
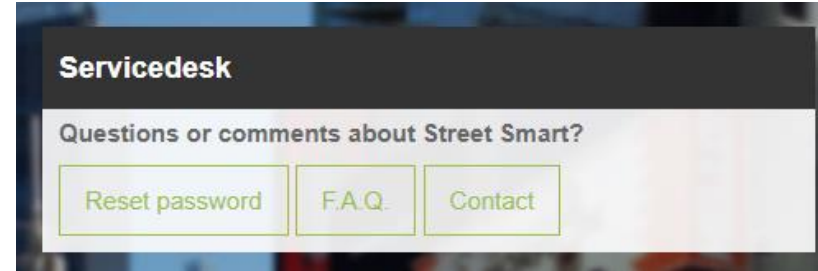
Or, go to:

<https://password.cyclomedia.com/>

- 2 **If you've forgotten your password**, enter your user name and select the **Send me a new password** button to have a new password generated and sent via email.

**To set a password of your choice**, enter your user name and select **I know my password and want to create a new one**.

💡 \*SSO login users, please contact your IT department.





# Next step = Street Smart Training – *There's More!*



Perform **measurements** in images



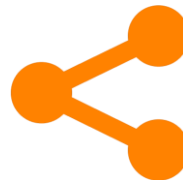
Overlay features on **map** and **imagery**



**Integrations** with ArcGIS and other systems



Use playlists to **view** and **share** locations



Create **reports**, **download images** and **share links**



Simulate **Drainage & Flooding**

# Want more?

- Contact your Cyclomedia representative to set up a training session for your organization.
- Visit our self-service **Street Smart** training site at <https://training.cyclomedia.com>
- Request our PDF course materials on **Street Smart** and **Street Smart for ArcGIS** from our [service desk](#).

You can access Cyclomedia's support page at <https://www.cyclomedia.com/us/support/support-users> for links to self-service training and our help portal.

