

## Factsheet Optimize Street Smart Connector

### Global overview:

The Optimize Street Smart Connector for Bentley MicroStation<sup>1</sup> is a tool developed by The People Group (The Netherlands). This tool allows MicroStation users to use Cyclomedia's Street Smart data (Cycloramas, Oblique images, Pointclouds etc.) inside MicroStation. The Connector is developed using the official Street Smart API (developed and maintained by Cyclomedia).

The Optimize Street Smart Connector is fully integrated in the MicroStation environment. Clicking, zooming or rotating in the Cyclorama image will result in the display of a viewing cone in the active MicroStation view. A click in the MicroStation view will show the closest Cyclorama image in the Street Smart viewer. Measurement results inside the viewer can be placed as MicroStation elements in the active design file. Geocoding is also supported, it is possible to search for an address and get the corresponding image automatically.

### Requirements:

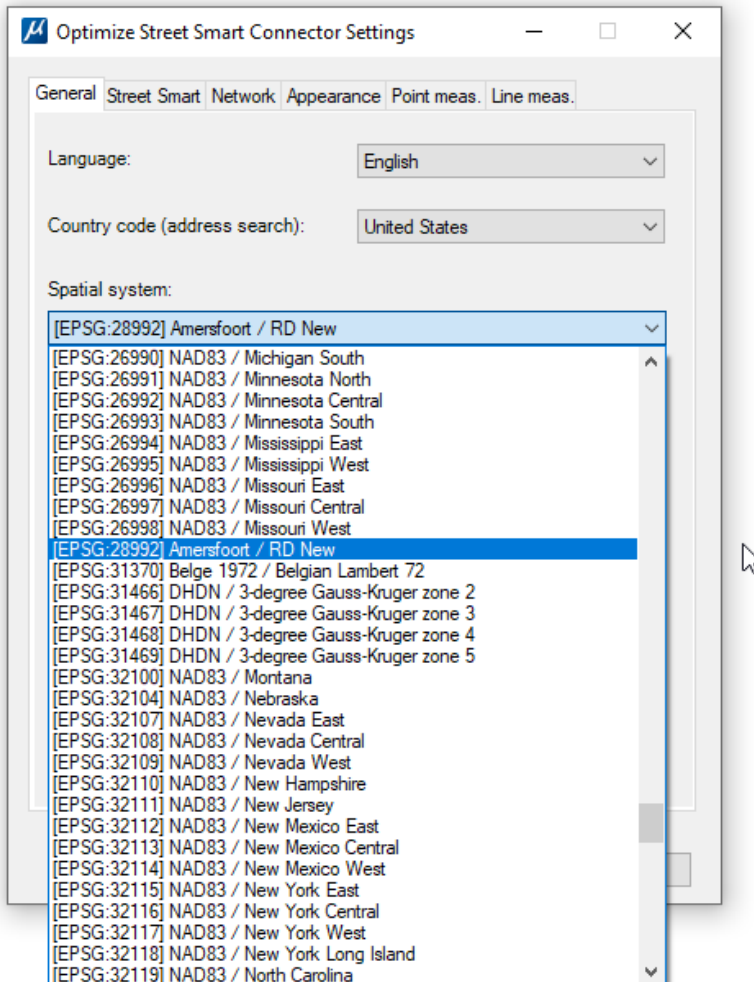
Optimize Street Smart Connector will work on the Connect Edition version of MicroStation, PowerDraft or OpenCities Map. We recommend using recent updates. The older v8i versions of the Bentley products are NOT supported.

<sup>1</sup> Actually not only for Bentley MicroStation but also related products like PowerDraft and OpenCities Map and OpenRoads Designer.

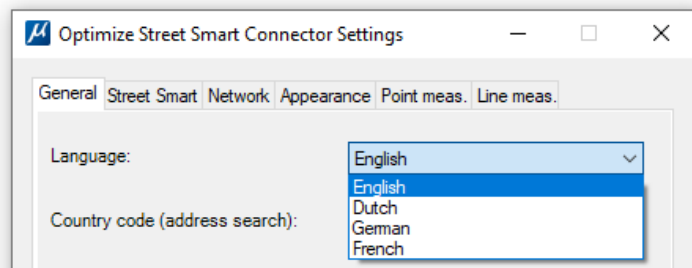
Obviously, it is important that a valid Cyclomedia Steet Smart license is available. Without a license there are no images to display in the Connector.

### Internationalization:

Optimize Street Smart Connector can be used in many places. First of all a large set of supported coordinate systems is available:



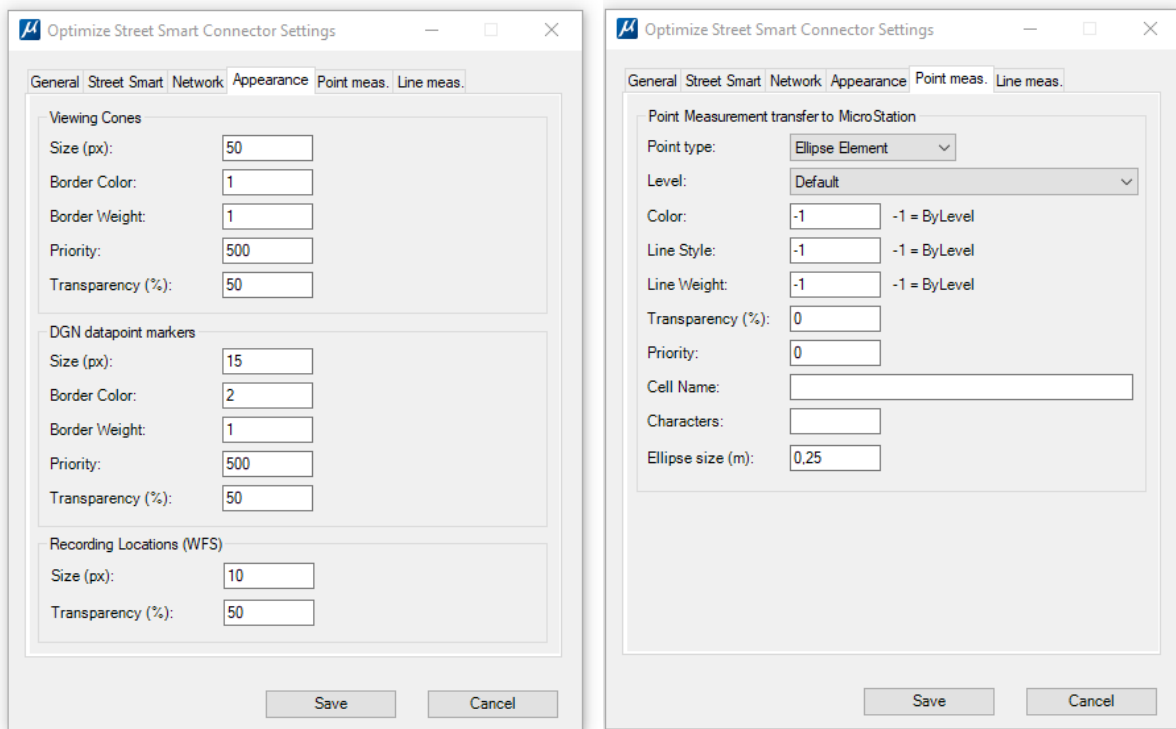
Secondly, the GUI language can be specified as well:



Finally, it is possible to choose a country code. This country code will be used to optimize address searches.

### Customizable:

It's possible to specify the symbology of the MicroStation elements like the viewing cone and saved measurements. The user can define colors, weights, levels and so on:



### Licensing:

Optimize Street Smart Connector is license-protected. Our licensing system is using a license key and a small local database to check the concurrent use. No internet connection to a licensing server is needed. License keys are distributed by our technical support department. License keys are time-limited and do support concurrent use.

### Setup:

Installation of Optimize Street Smart Connector is easy. There are MSI files (Microsoft Installer package) for the program Files and ProgramData parts. In addition to this, a special setup tool is delivered as well to facilitate the setup-process. The installation process is described in an easy to follow installation document.



## Support:

Optimize Street Smart Connector is developed, maintained and supported by The People Group. See the links below for additional information.

- Support/helpdesk: [support.thepeoplegroup.nl](https://support.thepeoplegroup.nl)
- Product Page: [Optimizeconnect.nl](https://optimizeconnect.nl)

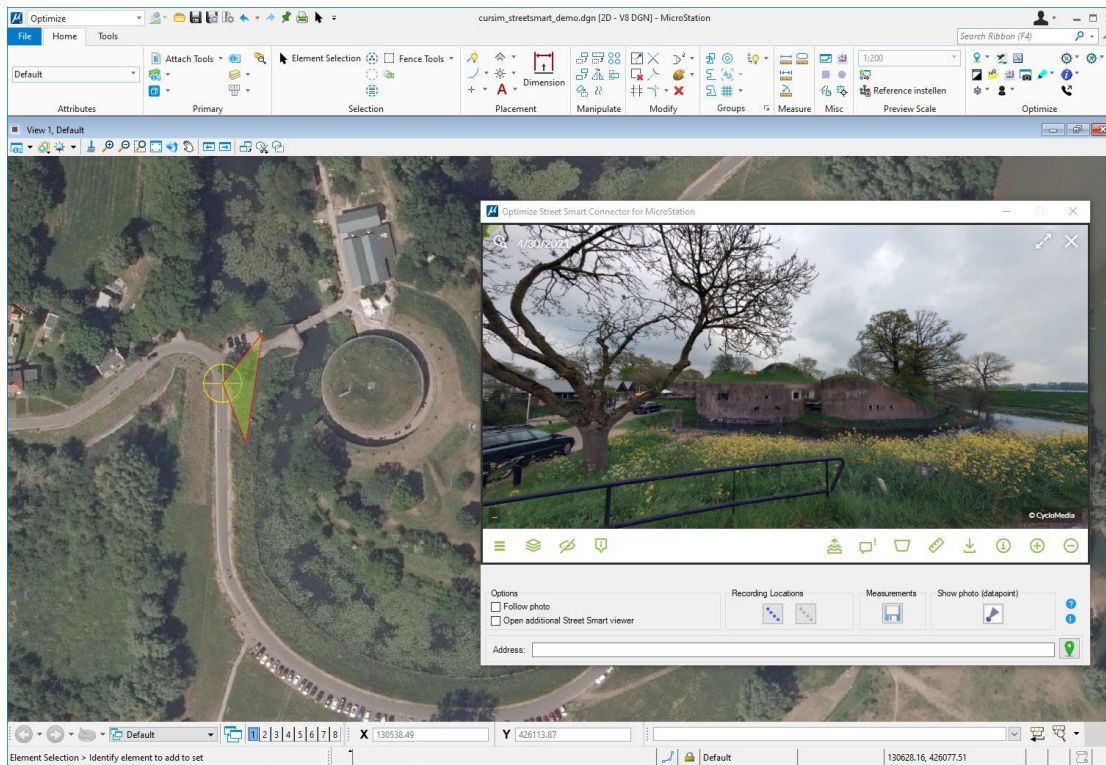
Please contact Cyclomedia (<https://www.cyclomedia.com/>) for commercial information about the Connector or for support on Street Smart licenses, images, Point Cloud data, API issues etcetera.



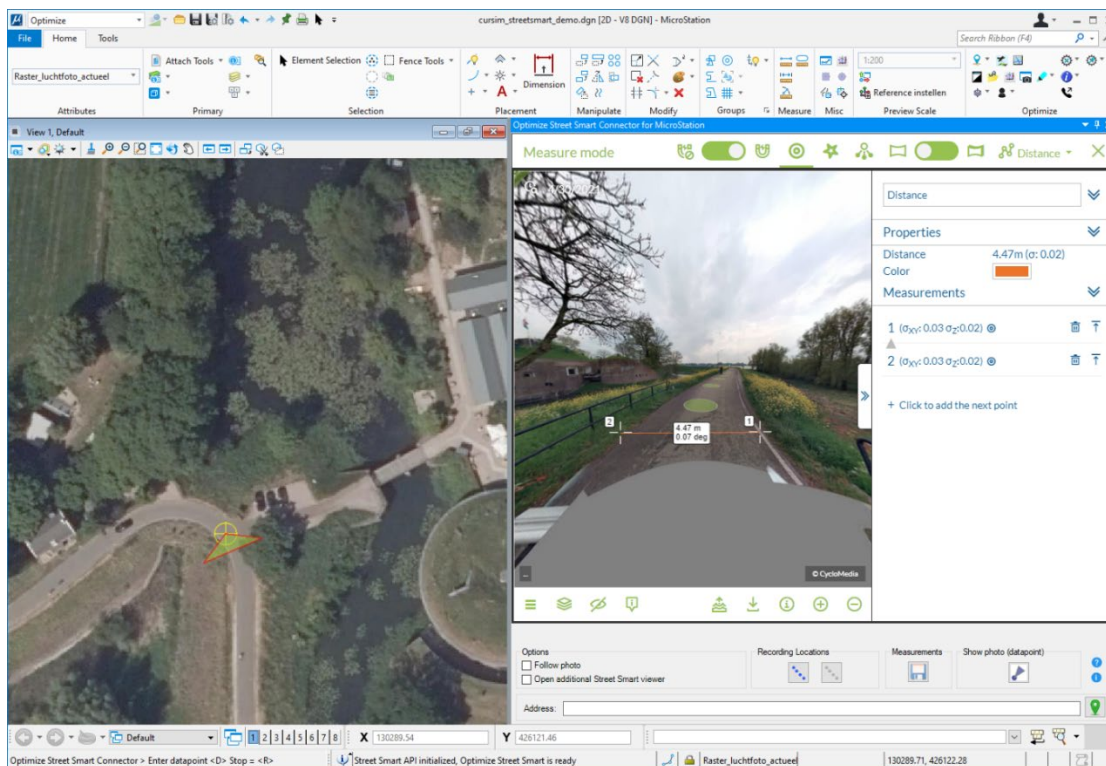


Sample screen shots:

Undocked mode:



Docked mode (with Measuring active):



Versie 0,9.2 (16-08-2021 – CMR)

