

cyclomedia

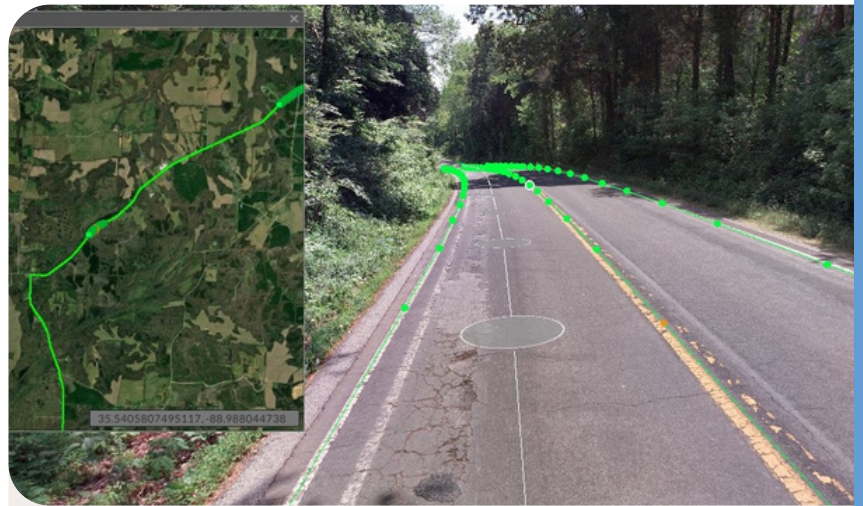
Visualize a
better
world.

Pavement Striping Condition

Cyclomedia, the leading roadway asset data provider to state and local agencies, understands the complexities our customers face. Our solutions provide ground truth-based datasets and valuable insights to enhance data-driven decision making.

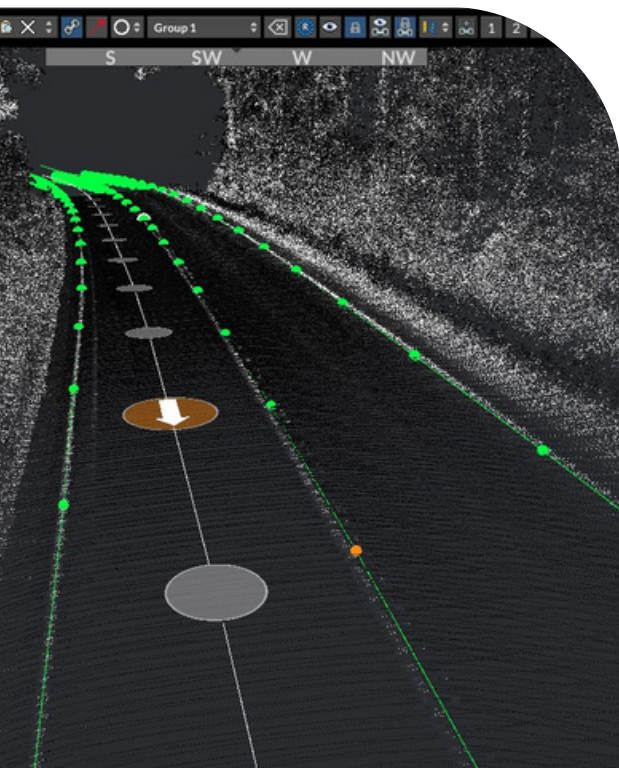
Assessing your pavement striping condition across your expansive road network is costly, time-consuming, as well as potentially dangerous for your field crews.

In an effort to solve some of these significant problems faced by our customers, Cyclomedia leveraged our advanced AI and machine learning technologies to deliver our customers consistent and accurate condition scores for their entire network.



How does it work?

- Cyclomedia devised a fully automated process leveraging AI and ML technology to extract all your pavement striping.
- Cyclomedia uses a combination of an RGB visual scoring based upon a trained ML model as well as normalized intensity data from our LiDAR sensor to provide an overall condition score for pavement striping.
- This combined scoring system allows Cyclomedia to provide an automated condition assessment of the pavement striping along the roadway at network scale with an unmatched density compared to traditional manual approaches.
- Cyclomedia will deliver a dataset of all pavement striping with a specific attribute of condition, making it easy to focus your maintenance on the pavement striping that needs to be replaced.



Real data.
True understanding.
Big impact.

Pavement Striping Condition



No more sending personnel into the field to manually inspect the condition of potentially thousands of miles of pavement striping across your network.

Cyclomedia delivers a complete network inventory of your pavement striping conditions generated from the image and LIDAR scan data. This data is delivered as a separate package that links back to your parent pavement striping asset through the use of a Parent ID.

Pavement Striping represents one of the hardest to assets to maintain across organizations due to its vast mileage and degradation variances.

Accuracy and Completeness

- Absolute position accuracy: 4in
- Condition reflective attribution will be based on the results of intensity readings within 66 feet of the recording point.

Features and Attributes

- ID
- Pavement Striping Parent ID
- Begin Mile Measure
- End Mile Measure
- Street Smart URL
- Begin x/y/z
- End x/y/z
- Recording ID
- Route ID
- Condition

